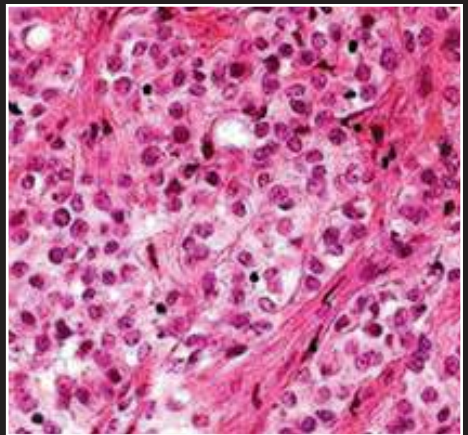
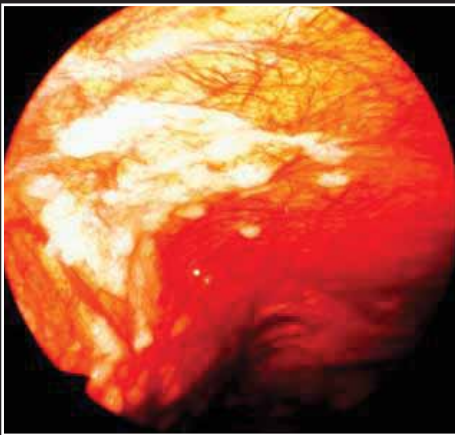


1st International Symposium on Lung-Sparing Therapies for Malignant Pleural Mesothelioma



May 21, 2011

**Sheraton Delfina
Santa Monica, California**

CME OFFICE OF
CONTINUING
MEDICAL
EDUCATION

DAVID GEFKEN SCHOOL OF MEDICINE at **UCLA**

Malignant pleural mesothelioma (MPM) is an unusual cancer because it grows throughout the chest cavity as a diffuse process rather than a typical solid nodule or mass. Because of this unique characteristic, it has very specific treatment issues. MPM also is an unusual tumor with less than 3000 new cases annually, and therefore, most pulmonologists and medical oncologists only see these patients occasionally. Despite this, it is critical that all physicians involved in the care of MPM patients be familiar with the issues and have a thorough understanding about the tumor itself, its evaluation process, staging, treatment and the role of multidisciplinary management of these patients. This includes the role and extent of surgery as well as radiation, chemotherapy, and newer targeted therapies. Robert B. Cameron, MD, FACS, the course organizer and the Director of the UCLA Mesothelioma Program, has had over 18 years of experience with treating patients with MPM and, in particular, lung-sparing therapies, including pleurectomy and decortication surgical procedures and a number of complementary adjuvant therapies with the goal of treating this deadly disease more as a chronic illness.

Course objectives

At the completion of this course, participants should be able to:

- understand the diffuse nature of MPM and the problems which that poses
- understand the evaluation and staging process of this tumor
- understand the role of each modality in multidisciplinary therapies, including surgery, radiation, and chemotherapy
- understand the indications and contra-indications for surgery
- understand the pros and cons of lung-sparing surgery for MPM
- understand the chronic nature of treatment for MPM
- understand the role for palliative care

Target Audience

- Pulmonary physicians who may be involved in patient workups
- Medical Oncologists who may be involved in patient therapy
- Mesothelioma experts who want to learn/share experiences about lung-sparing therapies
- Patients, family, friends who desire to learn more about the disease

Course Chair

Robert B. Cameron, MD, FACS

Professor of Clinical Cardiothoracic Surgery and Surgical Oncology
Director, Mesothelioma Program
David Geffen School of Medicine at UCLA
Chief, Thoracic Surgery
West Los Angeles VA Medical Center
Los Angeles, CA

International and Distinguished Faculty

Thierry Jahan, MD

Associate Professor of Medicine
Bonnie J and Anthony Addario Endowed
Chair in Thoracic Oncology
UCSF School of Medicine
San Francisco, CA

Sunil Singhal, MD

Assistant Professor
University of Pennsylvania School of
Medicine
Philadelphia, PA

Tom Treasure, MD, MS, FRCS, FRCP

Professor of Cardiothoracic Surgery
Clinical Operational Research Unit
UCL (Department of Mathematics)
London, England

David A. Waller, FCCP, FRCS(CTh)

Consultant/Senior Lecturer in Thoracic
Surgery
University Hospitals Leicester
Leicester, UK

Faculty

Fereidoun Abtin, MD

HS Clinical Assistant Professor
Department of Radiological Science
David Geffen School of Medicine at UCLA
Los Angeles, CA

Clare Cameron

Executive Director
Pacific Meso Center at the Pacific Heart,
Lung, & Blood Institute
Los Angeles, CA

Sant P. Chawla, MD

Associate Clinical Professor
Medical Oncology
David Geffen School of Medicine at UCLA
Los Angeles, CA

Andrew E. Hendifar, MD, MPH

Sarcoma Oncology Center
Santa Monica, CA

Terrence N. Latham

Mesothelioma Victim and Lung-Sparing
Therapy Survivor
Dana Point, CA

Geraldine Lepore

Mesothelioma Family Representative
Camarillo, CA

Anne Rorie, MSN, NP

Mesothelioma Program Nurse Practitioner
David Geffen School of Medicine at UCLA
Los Angeles, CA

Michael Selch, MD

Professor, Clinical Radiation Oncology
David Geffen School of Medicine at UCLA
Los Angeles, CA

Dan Spurgeon, MD

Palliative Care Medical Group
Huntington Hospital Palliative Care Consult
Service
Institute for Palliative Medicine at
San Diego Hospice
Pasadena, CA

8:00 am **Welcome**
Robert B. Cameron, MD, FACS

MORNING SESSION I: Lung-Sparing Surgical Techniques

8:15 am **The MARS Trial Findings: Might Lung-Sparing Surgery Be Better?**
Tom Treasure, MD, MS, FRCS, FRCP

8:45 am **From EPP to Lung Sparing Total Pleurectomy – A Personal Journey in Radical Treatment For Malignant Pleural Mesothelioma**
David A. Waller, FCCP, FRCS(CTh)

9:15 am **Radical But Rational Lung-Sparing Surgery: The UCLA Approach**
Robert B. Cameron, MD, FACS

9:45 am **Discussion**

10:00 am **Break**

MORNING SESSION II: Lung-Sparing Adjuvant Therapies

10:15 am **Lung-Sparing Adjuvant Radiation Techniques**
Michael Selch, MD

10:45 am **Percutaneous Adjuvant Cryo- and Radiofrequency Ablation**
Fereidoun Abtin, MD

11:15 am **Systemic Adjuvant and Neo-adjuvant Chemotherapy**
Thierry Jahan, MD

11:45 am **Discussion**

12:00 **Lunch**



AFTERNOON SESSION I: Potential Future Lung-Sparing Adjuvant Therapies

- 1:00 pm **Immuno-Gene Therapy for Mesothelioma**
Sunil Singhal, MD
- 1:30 pm **Veglin and Other Angiogenesis Inhibitors**
Sant P. Chawla, MD and Andrew E. Hendifar, MD, MPH
- 2:00 pm **Interferon Alpha Maintenance Therapy**
Robert B. Cameron, MD, FACS
- 2:30 pm **Discussion**
- 2:45 pm **Break**

AFTERNOON SESSION II: Supportive Therapies

- 3:00 pm **Living with Mesothelioma**
Dan Spurgeon, MD
- 3:15 pm **Emotional and Financial Support Provided by Foundation Communities**
Clare Cameron
- 3:30 pm **Perioperative Care and Nursing Supportive Services**
Anne Rorie, MSN, NP
- 3:45 pm **Patient Goals and Concerns**
Terrence N. Latham
- 4:00 pm **Family Perspectives on Living with Mesothelioma**
Geraldine Lepore
- 4:15 pm **Discussion**
- 4:30 pm **Concluding Remarks**
Robert B. Cameron, MD, FACS
- 4:45 pm **Adjourn**



General Information

Conference Location

The Sheraton Delfina
530 Pico Blvd.,
Santa Monica, CA 90405
310-399-9344

Accommodations

If you wish to stay at the hotel you can call reservations at 888-627-8532

Parking

One day self parking will be validated for course attendees

Fees

Physicians: \$150
Nurses: \$100
Family and Patients: \$50

Refunds

Cancellations must be received in writing by April 15 and will be subject to a \$50 processing fee. A full refund will be provided if for any reason the course must be cancelled or rescheduled.

Enrollment

Online

Go to www.cme.ucla.edu/courses to enroll online using your American Express, Discover, MasterCard or Visa. Click on 1st International Symposium on Lung-Sparing Therapies for Malignant Pleural Mesothelioma.

By Mail

Enroll by mail with your Discover, MasterCard or Visa by using the form attached. Mail to the Office of Continuing Medical Education, David Geffen School of Medicine at UCLA, 10920 Wilshire Blvd., Suite 1060, Los Angeles, CA 90024.

By Fax

Enroll by fax with your Discover, MasterCard or Visa by sending the completed enrollment form with credit card information and authorizing signature. Fax to 310-794-2624.

By Phone

Use your Discover, MasterCard or Visa to enroll over the phone. Call 310-794-2620.

Accreditation

The Office of Continuing Medical Education, David Geffen School of Medicine at UCLA is accredited by the Accreditation Council for Continuing Medical Education to provide continuing medical education for physicians. The Office of Continuing Medical Education, David Geffen School of Medicine at UCLA designates this educational activity for a maximum of 7.25 *AMA PRA Category 1 Credits*[™]. Physicians should only claim credit commensurate with the extent of their participation in the activity.

Disclosure

The FDA has issued a concept paper which classifies commercial support of scientific and educational programs as promotional unless it can be affirmed that the program is “truly independent” and free of commercial influence. In addition to independence, the FDA requires that non-promotional, commercially supported education be objective, balanced, and scientifically rigorous. The policy further states that all potential conflicts of interest of the CME staff and faculty be fully disclosed to the program’s participants. In addition, Accreditation Council for Continuing Medical Education policy now mandates that the provider adequately manage all identified potential conflicts of interest prior to the program. We, at UCLA, fully endorse the letter and spirit of these concepts.



Mail Application for Enrollment (please print)

Course Title & Number	Amount
1st International Symposium on Lung Sparing Therapies for Malignant Pleural Mesothelioma M101-43	
Physicians \$150	
Nurses \$100	
Family & Patients \$50	

LAST FOUR DIGITS OF SOCIAL SECURITY NUMBER

NAME (FIRST, MIDDLE, LAST)

DEGREE

SPECIALTY

PREFERRED MAILING ADDRESS

CITY/STATE/ZIP

AREA CODE/DAYTIME PHONE

AREA CODE/FAX

E-MAIL

CHECK enclosed, payable to *Regents of the University of California*

CHARGE Visa MasterCard Discover

Card Number _____

Authorizing Signature _____ Exp. Date ____ / ____

**Mail to: Office of Continuing Medical Education
David Geffen School of Medicine at UCLA
Mesothelioma
10920 Wilshire Blvd., Suite 1060
Los Angeles, CA 90024-6512**

UCLA Office of Continuing Medical Education
David Geffen School of Medicine at UCLA
405 Hilgard Avenue MC 29
Los Angeles, California 90095-6938

Non-Profit Org.
U.S. Postage
PAID
UCLA

1st International Symposium on Lung-Sparing Therapies for Malignant Pleural Mesothelioma

May 21, 2011

**Sheraton Delfina
Santa Monica, California**